

Bringing quality **testing** closer  
to you and your **patients.**

## Access 2 Immunoassay System

Blood Banking  
Centrifugation  
Chemistry  
Flow Cytometry  
Hematology  
**Immunoassay**  
Information Systems  
Lab Automation  
Molecular Diagnostics  
Rapid Diagnostics



# Designed to fit your **space** and **time**.



## **Increase your value without sacrificing your square footage.**

The Access 2 was designed to have the robustness of a reference-lab immunoassay analyzer in the convenient size of a bench-top instrument; giving you greater control over quality, reliability and speed without sacrificing valuable floor space.

- One of the smallest bench-top analyzers in its class
- Runs up to 100 tests per hour
- STAT and automatic reflex testing

## **Testing that lives up to your standards.**

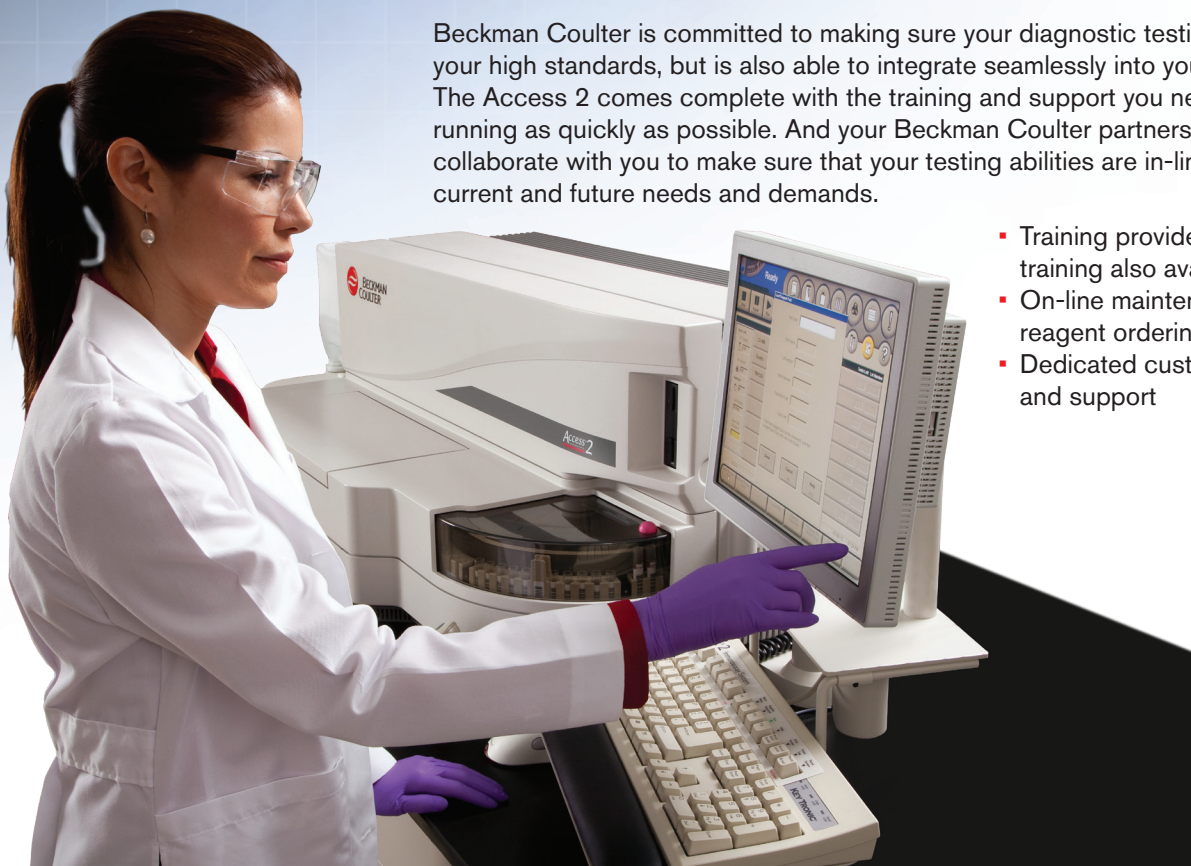
Your reputation depends on the quality of your services and Beckman Coulter takes that into account with every biomarker innovation we develop. Our goal is to make technology that ensures your success, not threaten it. The Access 2 was specifically designed to enable accurate testing results every time.

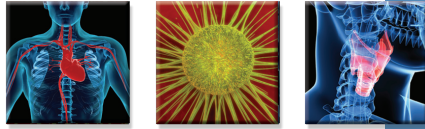
- Pipettor obstruction detection
- Magnetic particle separation
- Chemiluminescent detection technology

## **You get more than an instrument. You get a diagnostic partner.**

Beckman Coulter is committed to making sure your diagnostic testing is not only up to your high standards, but is also able to integrate seamlessly into your current environment. The Access 2 comes complete with the training and support you need to get you up and running as quickly as possible. And your Beckman Coulter partners are always willing to collaborate with you to make sure that your testing abilities are in-line with both your current and future needs and demands.

- Training provided (advanced operator training also available)
- On-line maintenance help and reagent ordering available
- Dedicated customer service and support





*Your diagnostic needs  
can be met with a broad range of  
testing specialties represented by more  
than 55 available assays.*

### The testing you need, when you need it.

Beckman Coulter offers an extensive immunoassay diagnostic testing menu featuring markers that fulfill your patient-care needs. Our diagnostic offerings range from sTfR in our anemia panel to our reproductive assays SHBG and Testosterone. And our extensive automated-assay choices for thyroid, oncology and many other diagnostic specialties are used in hospitals, clinics and physician office laboratories worldwide.



- Over 55 available immunoassay diagnostic assays
- Multiple assays available in the diagnostic specialties you need most
- Continuous menu expansion with new and novel assays
- Simple, user-friendly interface

### Easy-to-use, easy-to-store reagent kits

The Access 2 uses slim-line reagent packs that go from box to instrument with ease. The Access reagent kit boxes are easy to store, making the most of your lab's refrigerator space. And the ease-of-use reagent carousel and sample loading allows you to spend more time with your patients, not an instrument.

- On-board refrigeration storage of up to 24 assays
- 14-56 day reagent open-pack stability
- One-year reagent shelf life (typical)
- Load up to 60 samples at one time



#### Adrenal/Pituitary

Cortisol (Serum/Plasma/Urine)

#### Allergy

Total IgE

#### Anemia

EPO  
Ferritin  
Folate  
Folate (RBC)  
Intrinsic Factor Ab  
sTfR  
Vitamin B12

#### Blood Virus

HAV Ab  
HAV IgM  
HBc Ab  
HBc IgM  
HBs Ab  
HBs Ag  
HBs Confirmatory  
HCV Ab PLUS\*  
HIV Combo\*

#### Bone Metabolism

Intact PTH  
Ostase  
Ultrasensitive hGH

#### Cardiac

AccuTnI Troponin I  
CK-MB  
Digoxin  
Myoglobin  
Triage BNP\*\*

#### Diabetes

Ultrasensitive Insulin

#### Infectious Disease

CMV IgG  
CMV IgM  
Rubella IgG  
Rubella IgM  
Toxo IgG  
Toxo IgM II

#### Inflammation

IL-6

#### Reproductive

AFP  
βhCG, Total  
DHEA-S  
Estradiol  
hFSH  
hLH  
Inhibin A  
PAPP-A  
Progesterone  
Prolactin  
SHBG  
Testosterone  
Unconjugated Estriol

#### Thyroid

T3 (Free and Total)  
T4 (Free and Total)  
Fast hTSH  
HYPERsensitive hTSH  
Thyroglobulin  
Thyroglobulin Ab II  
Thyroid Uptake  
TPOAb

#### Tumor Markers

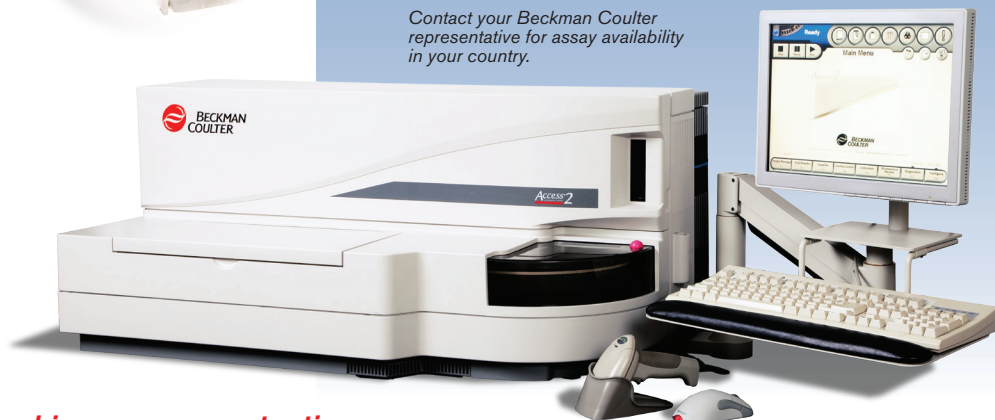
AFP  
CEA  
Hybritech PSA  
Hybritech free PSA  
Hybritech p2PSA†  
BR Monitor (CA 15-3 Antigen)  
GI Monitor (CA 19-9 Antigen)  
OV Monitor (CA 125 Antigen)

\* Available through a partnership with Bio-Rad Laboratories, Inc.

\*\* Triage BNP is available exclusively from Alere San Diego, Inc. d/b/a Biosite Incorporated, an Alere Company, or its authorized distributors for use on Beckman Coulter immunoassay systems. Alere and Triage are trademarks of the Alere group of companies.

† Not available in the U.S.

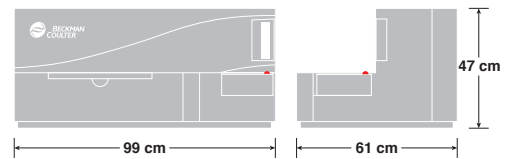
Contact your Beckman Coulter representative for assay availability in your country.



Beckman Coulter **Partnering beyond immunoassay testing.**

*Clinical Chemistry analyzers and reagents / Hematology analyzers and reagents / Rapid Diagnostic testing*

# Specifications



## Technology

Dioxetane-based chemiluminescent (Lumi-Phos)  
Magnetic particle separation

## Detection Systems

Chemiluminescent detector:  
Luminometer

## Throughput

100 tests/hr maximum

## Compartment Temperatures

Incubator and wash/read wheel: 36°C  
Reagent compartment: 3 to 10°C

## Reagent Capacity

24 self-sealing reagents packs of 50 tests each

## Immunoassay Menu Capacity

> 55 preprogrammed, bar-coded immunoassay methods currently available\*

## Bar-coded Reagents

Automatic tracking of:  
Number of tests  
Available tests  
Expiration date  
Lot number  
Calibration expiration

## Calibration

Calibration curve stability up to 56 days (assay dependent)  
Calibration curves and parameters displayed on screen and printouts

## Sample Management/Capacity

Up to 60 samples at one time in 6 trays of 10 samples each

### Bar-code symbologies:

Code 39 (Code 3 of 9 or SD-3)  
Code 128 (USD-6)  
Interleaved 2 of 5 (USD-1)  
Codabar (USD-4)

### Sample volume:

5 – 250 µL (assay dependent)

Primary probe obstruction detection

## Sample Types (assay dependent)

Serum  
Plasma  
Urine  
Amniotic fluid  
Whole blood

## Sample Container Sizes

### Primary Tubes:

12, 13 X 75 mm glass or plastic  
16 X 75 mm  
13, 16 X 100 mm

### Sample Cups:

2.0 mL, 3.0 mL  
1.0 mL, 2.0 mL insert cups

Pediatric insert  
Autoaliquot tube

## Communication Modes

Uni-directional, bi-directional, bi-directional with true Host Query  
RS-232C Serial

## Power and Environmental Requirements

### Analytic unit:

115-120 VAC at 15 amps, or 220-240 VAC at 6 amps (50/60 hz)

### Heat Output:

2730 BTU/hr (analytic unit)

### Ambient Operating Environment:

Ambient Temperature: See IFU  
Relative Humidity: 20 to 80% relative, non-condensing  
Altitude: ≤ 2,000 m (6,500 ft.)  
Ambient Light: 0 to 200 foot candles

## System Console Computer

400 MHz processor  
3.5 inch, 1.44 MB floppy disk drive  
6.5 GB hard disk drive  
128 MB RAM  
w15 inch flat panel monitor

## Dimensions and Weight

### Analyzer:

Height: 47 cm (18.5 in)  
Length: 99 cm (39 in)  
Depth: 61 cm (24 in)  
Weight: 91 kg (200 lbs)

### Clearance Requirements:

Rear = 5 cm (2 in)  
Left = 30.5 cm (12 in)  
Right = 76 cm (30 in)  
Top = 76 cm (30 in)



\* Contact your Beckman Coulter representative for assay availability in your country.

Beckman Coulter, the stylized logo, Access, Ostase and Hybritech are trademarks of Beckman Coulter, Inc. and are registered with the USPTO. Lumi-Phos is a trademark of Lumigen, a Beckman Coulter Company.

For Beckman Coulter's worldwide office locations and phone numbers, please visit [www.beckmancoulters.com/contact](http://www.beckmancoulters.com/contact)

B2012-13004-01-DG-3k

[www.beckmancoulters.com](http://www.beckmancoulters.com)

© 2012 Beckman Coulter, Inc.

PRINTED IN U.S.A.